

Creating the future of analog music

DS Audioio

Creating the future of
analog music



Our mission is to "create the future of analog music"

We will continue to take on challenges to make the future a reality.

GRAND
MASTER EX

New analog extreme



Specifications

Cartridge



One-piece diamond cantilever

The Grand Master Extreme employs a 0.22mm square one-piece diamond cantilever, where the diamond cantilever and the needle tip are crafted from a single diamond. Typically, the diamond tip of the cantilever and the needle tip are bonded together using adhesive. However, with the one-piece diamond cantilever, the cantilever and the needle tip are integrated into a single unit, enabling a more direct transmission of information from the needle tip.

Cartridge

Grand Master Extreme Optical Cartridge

Signal output	Photo-electric Conversion
Channel separation	27db more(1kHz)
Weight	7.7g
Output signal level	70mV more
Canti-lever & Needle	ONE PIECE DIAMOND
Body material	Ultra duralumin
Cantilever holder material	Stainless
Needle pressure	2.0g~2.2g(2.1g is recommended)
Stylus	Micro Ridge

Enter the next generation...
enter grand master.

GRAND
MASTER

"The Grand Master is so truly supreme in resolution, transparency, spatial recreation, neutrality and any other parameter I can name that it's impossible for me not say what I usually try to avoid:

"This may be the best cartridge I've ever heard."

Ken Kessler Hi Fi News 2021



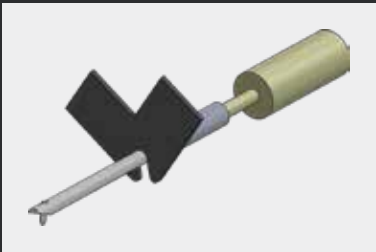
Specifications

Cartridge



Independent LED and photo-detector arrangement for the left and right channels

The new Grand Master optical cartridge system has been optimized by implementing an independent LED and photo-detector arrangement for the left and right channels. As a result, the cartridge output voltage has increased from 40mV to 70mV. The Grand Master cartridge offers an improved S/N ratio compared to its stable mates, resulting in an even lower noise floor and far greater musical clarity.



Weight of shading plate is reduced by more than 50%

The implementation of independent left and right channel LEDs allow for the positioning of the optical system to be optimized as well as necessitating the use of a newly designed shading plate that has been significantly reduced in size compared to our earlier designs. In addition to this reduction in size, the material used to produce the shading plate has been changed from aluminum to 99.9% pure beryllium to reduce its mass further.



Diamond cantilever

The Grand Master is the first DS Audio cartridge to feature a diamond cantilever with a MicroRidge stylus. The unique cartridge body structure was designed to promote maximum rigidity. In addition, the Grand Master utilizes internal wiring 1.6 times thicker than used in the second-generation cartridges to reduce impedance.

Cartridge

Grand Master Optical Cartridge

Signal output	Photo-electric Conversion
Channel separation	27db more(1kHz)
Weight	7.7g
Output signal level	70mV more
Canti-lever	Diamond
Body material	Ultra duralumin
Cantilever holder material	Stainless
Needle pressure	2.0g~2.2g(2.1g is recommended)
Stylus	Micro Ridge

Equalizer



Power unit and equalizer unit are completely separate units

The DS Audio Grand Master system features a separate equalizer and power supply, each in an independent chassis. Using 2.34 million uF and 2.97 million uF electrolytic capacitors within the equalizer and power supply units, respectively, has resulted in a significantly stronger power supply design and improved reproduction of deeper low frequencies. In addition, the Grand Master equalizer incorporates special film capacitors custom-built to DS Audio's specifications, along with non-induction winding resistors. The design features three transformers, each with a capacity 1½ times greater than that of the DS Master 1, one for the left and one for right channels, with the third handling the power supply to the optical cartridge.



Total of 6 optional low frequency cut off points

The Grand Master equalizer features single-ended RCA and balanced XLR outputs. Additionally, you can choose from 6 different low-frequency cut-off points, allowing it to seamlessly integrate with any hi-fi system.

Equalizer

Grand Master Equalizer for Optical Cartridge

Output voltage	700mV(1kHz)
Output impedance	RCA 120Ω, XLR 120Ω
Pre amp input impedance	More than 10kΩ
Input terminal	RCA terminal
Output terminal	RCA terminal×3, XLR terminal×3
Size	W45.2cm×H15.2cm×D48.6cm(Both)
Weight	25.1kg(Equalizer unit), 29.8kg(Power unit)

Semi-Flagship model

DS Master3

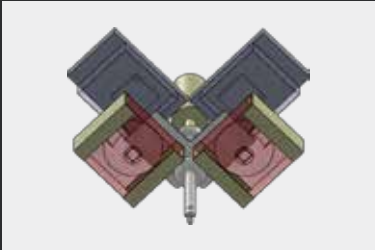
DS MASTER 3

The successor to DS Master1, which has created the history of DS Audio



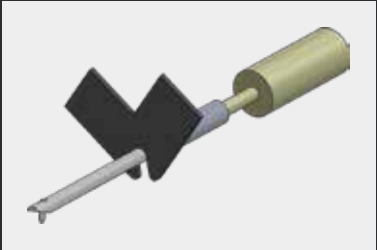
Specifications

Cartridge



Independent LED and photo-detector arrangement for the left and right channels

The new Master 3 optical cartridge system has been optimized, by implementing an independent LED and photo-detector arrangement for the left and right channels. As a result, the cartridge output voltage has dramatically increased from 40mV to 70mV. The Master 3 cartridge offers a greatly improved S/N ratio compared to its stablemates, resulting in an even lower noise floor and far greater musical clarity.



The weight of the shading plate is reduced by more than 50%

The implementation of independent left and right channel LEDs allows for the positioning of the optical system to be optimized as well as necessitating the use of a new shading plate that has been significantly reduced in size compared to our earlier designs. In addition to this reduction in size, the material used to produce the shading plate has changed from aluminum (as used in the second-generation cartridges) to 99.9% pure beryllium.



Diamond cantilever

A first for DS Audio, the Master 3 cartridge features the combination of a square pillar diamond cantilever with a Micro Ridge stylus. The cartridge body structure has been designed in such a way as to promote maximum rigidity. In addition to these features, the Master 3 utilizes internal wiring 1.6 times thicker than used in the second-generation cartridges in order to reduce impedance.

Cartridge

DS Master3 Optical Cartridge

Signal output	Photo-electric Conversion
Channel separation	27db more(1kHz)
Weight	7.9g
Output signal level	70mV more
Canti-lever	Square Pillar Diamond
Body material	Ultra duralumin
Cantilever holder material	Stainless
Needle pressure	2.0g~2.2g(2.1g is recommended)
Stylus	Micro Ridge

Equalizer



Dual monaural circuit design with three transformers and six selectable output patterns

The DS Master3 equalizer is a dual monaural circuit design with three transformers and completely independent L-channel and R-channel circuits. The power supply has been overwhelmingly strengthened to enable deeper, richer low-frequency expression. The DS Master3 equalizer has balanced and unbalanced outputs, and the low-frequency cutoff frequency can be selected from six different options.



Hand-made in Japan circuit board

Every component part used in our products is tested and evaluated by our expert Japanese technicians. In addition to using a specially printed circuit board, the twist-connection of the component legs is further evidence of DS Audio's excellent attention to detail. Each and every product is hand-made and quality assured by our skilled engineers.

Equalizer

DS Master3 Equalizer for Optical Cartridge

Output voltage	700mV(1kHz)
Output impedance	RCA 120Ω XLR 120Ω
Pre amp input impedance	More than 10kΩ
Input terminal	RCA terminal
Output terminal	RCA terminal×3, XLR terminal×3
Size	W45.2cm×H15.3cm×D48.4cm
Weight	23kg

New DS Audio
reference model



DS W3



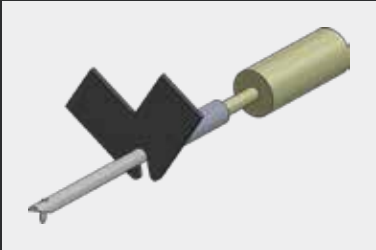
Specifications

Cartridge



Independent LED and photo-detector arrangement for the left and right channels

The new DS-W3 optical cartridge system has been optimized, by implementing an independent LED and photo-detector arrangement for the left and right channels. As a result the cartridge output voltage has greatly increased from 40mV to 70mV. The DS-W3 cartridge offers a greatly improved S/N ratio when compared to its stable mates, resulting in an even lower noise floor and far greater musical clarity.



Weight of shading plate reduced by more than 50%

The implementation of independent left and right channel LED's allows for the positioning of the optical system to be optimized as well as necessitating the use of a new shading plate that has been significantly reduced in size compared to our earlier designs. In addition to this reduction in size, the material used to produce the shading plate has changed from aluminium (as used in the second generation cartridges) to 99.9% pure beryllium.



Boron cantilever & Aluminum body

The DS-W3 cartridge features the combination of an boron cantilever with a line contact stylus. The cartridge body is made by aluminum and the structure has been designed in such a way as to promote maximum rigidity. In addition to these features, the DS-W3 utilizes internal wiring 1.6 times thicker than used in the second generation cartridges in order to reduce impedance.

Cartridge

DS-W3 Optical Cartridge

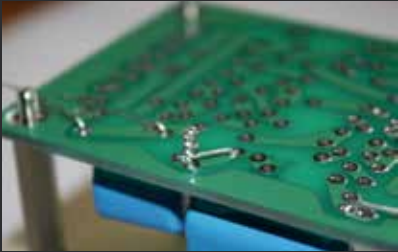
Signal output	Photo-electric Conversion
Channel separation	27db more(1kHz)
Weight	7.9g
Output signal level	500mV more
Canti-lever	Boron
Body material	Aluminum
Needle pressure	1.85g~2.05g(1.95g is recommended)
Stylus	Line contact

Equalizer



Changed the thickness of the circuit board and the thickness of the copper foil.

Compared to the DS-W2 equalizer, the thickness of the circuit board has been changed from 1.6 mm to 2.0 mm, and the thickness of the copper foil has been changed from 35μ to 70μ. Components are also optimized for third-generation cartridges. In addition, the DS-W3 equalizer has four different low-frequency outputs to choose from. The DS-W3 equalizer has both unbalanced and balanced outputs, so you can choose the output that best matches your system.



Hand-made in Japan circuit board

Every component part used in our products is tested and evaluated by our expert Japanese technicians. In addition to using a specially printed circuit board, twist-connection of the component legs is further evidence of DS Audio's excellent attention to detail. Each and every product is hand-made and quality assured by our skilled engineers.

Equalizer

DS-W3 Equalizer for Optical Cartridge

Output voltage	500mV(1kHz)
Output impedance	More thana 120Ω
Pre amp input impedance	More thana 10kΩ
Input terminal	RCA terminal
Output terminal	RCA terminal×2, XLR terminal×2
Size	W45cm×H12cm×D435cm
Weight	13.5g

Inheriting the essence of the Grand Master

DS 003

Stereo Sound Magazine's 2021 Best Buy Phono Cartridge Category #1

"Honestly, I think the price is too low for this sound."

Hiromi Wada, Stereo Sound Magazine #221



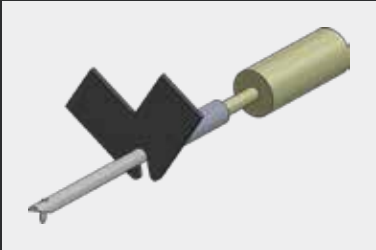
Specifications

Cartridge



Independent LED and photo-detector arrangement for the left and right channels

The new DS003 optical cartridge system has been optimized, by implementing an independent LED and photo-detector arrangement for the left and right channels. As a result the cartridge output voltage has greatly increased from 40mV to 70mV. The DS003 cartridge offers a greatly improved S/N ratio when compared to its stable mates, resulting in an even lower noise floor and far greater musical clarity.



Weight of shading plate reduced by more than 50%

The implementation of independent left and right channel LED’ s allows for the positioning of the optical system to be optimized as well as necessitating the use of a new shading plate that has been significantly reduced in size compared to our earlier designs. In addition to this reduction in size, the material used to produce the shading plate has changed from aluminium (as used in the second generation cartridges) to 99.9% pure beryllium.



Aluminum cantilever & Aluminum body

The DS003 cartridge features the combination of an aluminum cantilever with a line contact stylus. The cartridge body is made by aluminum and the structure has been designed in such a way as to promote maximum rigidity. In addition to these features, the DS003 utilizes internal wiring 1.6 times thicker than used in the second generation cartridges in order to reduce impedance.

Cartridge

DS 003 Optical Cartridge

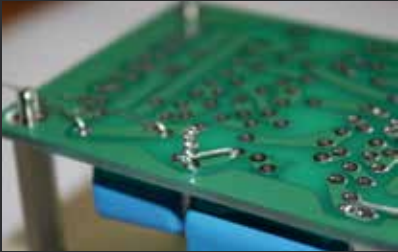
Signal output	Photo-electric Conversion
Channel separation	27db more(1kHz)
Weight	7.7g
Output signal level	70mV(1kHz cartridge output)
Canti-lever	Aluminum
Body material	Aluminum(A5052)
Cantilever holder material	Stainless
Needle pressure	2.0g~2.2g(2.1g is recommended)
Stylus	Line contact

Equalizer



Changed the thickness of the circuit board and the thickness of the copper foil.

Compared to the DS002 equalizer, the thickness of the circuit board has been changed from 1.6 mm to 2.0 mm, and the thickness of the copper foil has been changed from 35μ to 70μ.In addition, the DS003 equalizer allows you to select the cutoff frequency for the low frequency range from four types, allowing you to select an output that better matches your system.



Hand-made in Japan circuit board

Every component part used in our products is tested and evaluated by our expert Japanese technicians. In addition to using a specially printed circuit board, twist-connection of the component legs is further evidence of DS Audio’ s excellent attention to detail. Each and every product is hand-made and quality assured by our skilled engineers.

Equalizer

DS 003 Equalizer for Optical Cartridge

Output voltage	500mV(1kHz Equalizer output)
Output impedance	RCA 120Ω
Pre amp input impedance	More than 10kΩ
Input terminal	RCA terminal
Output terminal	RCA terminal×2
Size	W33cm×H9.2cm×D29.5cm
Weight	5.0kg

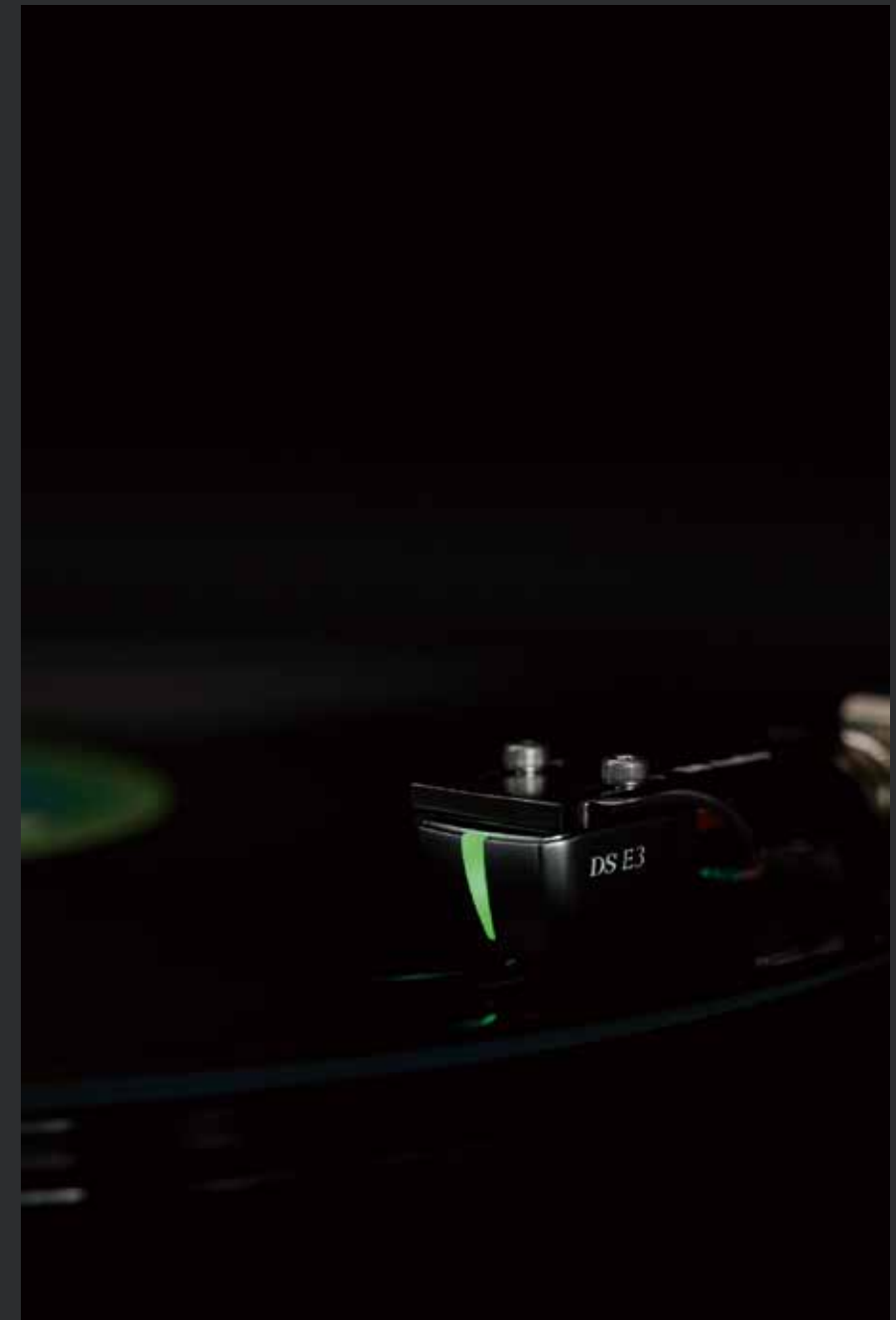
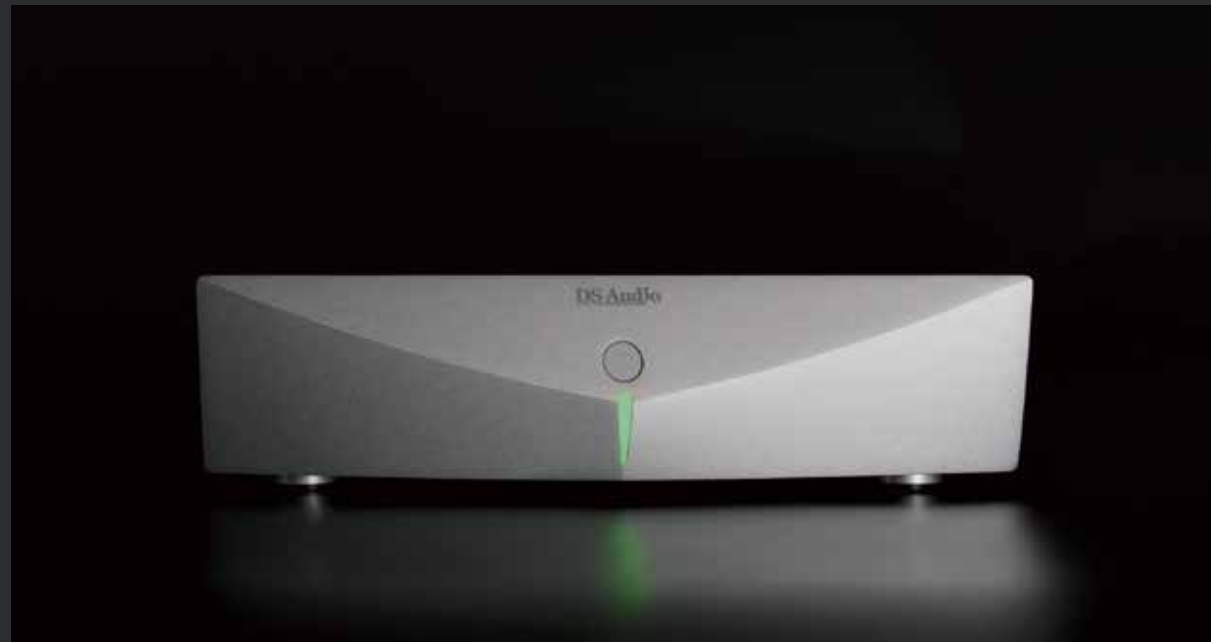
"The game changer"

DS E3

Truly beyond price.

The DS-E3 is a revolutionary technology in historic record reproduction.

Ikuo Tsunoda, Audio Critic



Specifications



Uses a third-generation optical cartridge mechanism

The DS-E3 uses a third-generation optical cartridge mechanism, the same design as our other products. The DS-E3 achieves an overwhelmingly low price while inheriting the merits of the third-generation mechanism, such as higher output due to independent LED and PD, improved channel separation, and the use of a beryllium light shielding plate.



Aluminum Cantilever with Elliptical needle

The cantilever is made of aluminum and the needle tip is a solid elliptical needle. While adopting the third-generation optical cartridge mechanism, the channel separation is set 1db lower to improve mass production efficiency.



New Amplification and Power Supply Circuits

In the DS-E3 equalizer, the amplification circuit has been made symmetrical, and the voltage supplied to the cartridge has been stabilized to achieve a clearer and faster sound.



Miniaturization is achieved by using an operational amplifier

The DS-E3 equalizer uses an operational amplifier as the amplifying element to minimize the signal path, thereby greatly reducing the number of components and achieving a smaller size. As a result, the DS-E3 equalizer is about 1/3 the size of the DS003 equalizer.

Cartridge

DS-E3 Optical Cartridge

Signal output	Photo-electric Conversion
Channel separation	26db more(1kHz)
Weight	7.7g
Output signal level	70mV more
Canti-lever	Aluminum
Body material	Aluminum
Needle pressure	2.0g~2.2g(2.1g is Recommended)
Stylus	Elliptical Needle

Equalizer

DS-E3 Equalizer for Optical Cartridge

Output voltage	500mV(1kHz)(at Equalizer output)
Output impedance	120Ω
Pre amp input impedance	More than 10kΩ
Input terminal	RCA terminal
Output terminal	RCA terminal
Size	W26cm×H6.9cm×D19.5cm
Weight	1.86kg

Crafted where
tradition meets light

MONO
SERIES



Specifications



Dedicated Suspension System Optimized for Mono Playback

The DS Audio Mono series cartridges are specifically designed for mono records, utilizing a suspension system that detects only lateral (left-right) stylus movements. Unlike stereo records, which encode audio through both lateral and vertical groove modulations, mono records use only lateral movements to convey audio information. By detecting only these lateral signals with high precision, the Mono cartridges eliminate unnecessary components and allow the unique sonic characteristics of mono records-such as clarity, impact, and tonal richness-to be faithfully reproduced. This dedicated design maximizes the expressive power of mono recordings, delivering the full emotional impact captured in each performance.



Solid Brass Base for Rich and Powerful Sound

Each Mono series cartridge features a precision-machined solid brass base, carefully selected for its acoustic properties. Brass offers a unique combination of high rigidity and relatively high internal damping among metal materials, making it ideal for audio applications. This brass base contributes to a thick, powerful low and mid-frequency response, while effectively suppressing unwanted resonances. The result is a dense, focused sound with exceptional tonal richness and presence, perfectly complementing the character of mono records. Even vintage recordings gain newfound energy and realism, bringing musical performances to life with depth and intimacy.

Mono Version Available Across All DS Audio Cartridge Models at No Extra Cost

We are pleased to offer a mono version for every model in the DS Audio cartridge lineup. Although the internal structure of our mono cartridges is specifically engineered for mono playback, their price remains identical to their stereo counterparts.

This allows customers to choose freely between stereo and mono versions according to their listening environment or musical preferences, without any cost differences. The DS Audio Mono series provides an ideal solution for fully unlocking the charm of mono records in their purest form.



Grand Master Extreme Mono

Signal output	Photo-electric Conversion
Weight	11.7 g
Output signal level	70 mV or more
Cantilever	One Piece Diamond
Base material	Brass
Cantilever holder material	Stainless
Needle pressure	2.0g-2.2g (2.1g is recommended)
Stylus	Micro Ridge



Grand Master Mono

Signal output	Photo-electric Conversion
Weight	11.7 g
Output signal level	70 mV or more
Cantilever	Diamond(round-shaft)
Base material	Brass
Cantilever holder material	Stainless
Needle pressure	2.0g-2.2g (2.1g is recommended)
Stylus	Micro Ridge



DS Master3 Mono

Signal output	Photo-electric Conversion
Weight	11.7 g
Output signal level	70 mV or more
Cantilever	Diamond(square-rod)
Base material	Brass
Cantilever holder material	Stainless
Needle pressure	2.0g-2.2g (2.1g is recommended)
Stylus	Micro Ridge



DS W3 Mono

Signal output	Photo-electric Conversion
Weight	11.7 g
Output signal level	70 mV or more
Cantilever	Boron
Base material	Brass
Cantilever holder material	Stainless
Needle pressure	1.85g-2.05g (1.95g is recommended)
Stylus	Line Contact



DS 003 Mono

Signal output	Photo-electric Conversion
Weight	11.7 g
Output signal level	70 mV or more
Cantilever	Aluminum
Base material	Brass
Cantilever holder material	Stainless
Needle pressure	2.0g-2.2g (2.1g is recommended)
Stylus	Line Contact



DS E3 Mono

Signal output	Photo-electric Conversion
Weight	11.7 g
Output signal level	70 mV or more
Cantilever	Aluminum
Base material	Brass
Cantilever holder material	Stainless
Needle pressure	2.0g-2.2g (2.1g is recommended)
Stylus	Elliptical

A new era of analog experience

TB-100



Specifications

Tube equalizer



Pure Vacuum Tube Amplifier

The TB-100 features carefully selected, quad-matched ECC82 (12AU7) tubes, optimized specifically for this model. Using in-house tools, performance variations during operation are minimized to within 1% (0.1dB), ensuring peak performance. Each channel is equipped with an inner tube for voltage amplification and an outer tube for output buffering, delivering a rich, transparent sound quality. Moreover, the amplifier employs a straightforward two-stage amplification circuit paired with low-impedance cathode follower output stages to provide a pure and dynamic audio experience.



Wideband Transformer Input

The audio signal from the PD is converted to a current-voltage signal, ensuring precise phase alignment between the left and right channels. Additionally, the design achieves a flat frequency response within -1dB over a broad range from 10Hz to 70kHz, delivering clear and high-quality sound.



Twin Mono Structure

A symmetric twin-mono configuration is adopted, incorporating completely independent grounds and power transformers. This design eliminates crosstalk between the left and right channels, enabling a cleaner and more immersive soundstage.



Low-Noise, Low-Voltage Power Supply

A dedicated low-noise regulated power supply is included for LED power and the PD negative bias voltage. Separate power circuits and transformers for each PD ensure greater voltage stability supplied to the cartridge.

Tube equalizer

Rated output voltage	500mV (1kHz)
Input terminals	RCA terminals
Output terminals	RCA terminals
Output impedance	700Ω
Size	W44cm/H15cm/D48.2cm (including terminals)
Weight	18.7kg



Center the Groove
Hear the Truth

ES 002
REFERENCE / CORE



Specifications



You Can't Reduce Wow & Flutter Without Eliminating Record Eccentricity

The dominant cause of wow & flutter in analog playback is not the turntable itself, but the eccentricity of the record. No matter how precise or expensive your turntable may be, as long as the record is off-center, wow & flutter cannot be truly reduced. For example, a record with an eccentricity of just 0.34 mm can generate wow levels more than 20 times greater than those of the turntable alone—even if the turntable boasts a wow & flutter rating of just 0.008%. This means that record eccentricity severely degrades the rotational accuracy of the entire playback system, making it impossible to achieve faithful sound reproduction, regardless of the hardware quality. By accurately correcting the record's eccentricity, you can dramatically reduce total wow & flutter—allowing your turntable system to finally perform to its full potential.



Two Major Problems Caused by Record Eccentricity

When a record is off-center, it increases wow & flutter and causes two major problems in playback accuracy and sound quality. The first issue is instability in playback frequency. For example, even if a 3kHz tone is originally recorded into the groove, excessive wow & flutter will prevent it from being reproduced accurately at 3kHz. This is a fundamental flaw for any system that aims to faithfully reproduce the recorded material. The second issue is mechanical instability. As the tonearm traces an off-center record, the cartridge is constantly shaken from side to side. This causes it to move away from its ideal operating center, resulting in interchannel phase shift, which can lead to audible muddiness and unstable imaging. To eliminate these issues and allow your audio system to reach its full potential, it is essential to reduce record eccentricity as much as possible.



Precise Centering in 3 Simple Steps

STEP 1 Measurement : Start by turning on your record player. While the platter is rotating, gently hold down the top of the stabilizer to stop its own rotation. This triggers the stabilizer to detect platter movement and enter measurement mode automatically. Once in measurement mode, the outer ring display will begin to rotate, and a message saying “Tap screen to start measurement” will appear. Tap the screen, and the message will change to “Measuring...” After approximately 2 seconds, the measurement is complete.

STEP 2 Adjustment : Stop the turntable and refer to the display. A cross mark (representing the center of rotation) will appear on the screen. Press and slightly shift the record so that the cross mark aligns as closely as possible with the absolute center of the screen. The display's color elements—outer ring, cross mark, and “After” bar—visually indicate the degree of eccentricity.

STEP 3 Restart : Once the cross mark is aligned with the true center, restart the record player to confirm that the eccentricity has been corrected. Then, enjoy playback with minimized wow & flutter and enhanced audio performance.



Further Pursuit of Perfection in the ES-002

The ES-001 eccentricity detection stabilizer earned high praise from analog audio enthusiasts. Inheriting its core design, the ES-002 introduces carefully considered improvements to achieve a higher level of perfection. Enhancements in structure, materials, and balance ensure superior reliability and ease of use in practical applications. The ES-002 is a meticulously refined evolution of the ES-001, enhancing durability, reliability, and operability in every aspect. The difference is in the details.

Simplified and Robust Construction

The number of components has been reduced, resulting in a more streamlined and reinforced design. This simplicity contributes to improved reliability and structural stability.

Improved Housing Durability

The battery compartment has been redesigned, and new materials have been adopted for the sensor unit, further enhancing durability during extended use.



Optimized Center of Gravity for Greater Stability

The internal configuration has been rebalanced to achieve ideal rotational performance. This refinement enables the stabilizer to deliver smoother, more natural operation.

ES-002 Reference (Reference Model)

Building upon the design philosophy of the ES-001, the ES-002 Reference is a reference model that pursues an even higher level of refinement. Prioritizing sound quality above all, it is constructed using only the finest grade components. Combining outstanding audio performance with highly accurate eccentricity detection, this model represents the culmination of DS Audio's stabilizer technology.



ES-002 Reference	
Dimensions	φ 80mm × H70mm
Weight	620g
Body Material	Aluminum (A5052)
Exterior Finish	Black anodizing + Glossy black nickel plating
Bottom Plate	Non-magnetic tungsten
Internal Parts	Sound-quality prioritized metal components (partial use)
Dedicated Case	Included
Batteries	Two AA batteries
Accessories	Battery set Screwdriver Reamer USB cable

ES-002 Core (Core Model)

Offering the same measurement accuracy and core functionality as the Reference model, the ES-002 Core is a practical option designed with cost-efficiency in mind.

By replacing the most expensive tungsten components with brass, using resin for internal parts, and simplifying the accessories, it maintains identical performance while being more accessible.



ES-002 Core	
Dimensions	φ 80mm × H70mm
Weight	540g
Body Material	Aluminum (A5052)
Exterior Finish	Black anodizing + Gray anodizing
Bottom Plate	Brass
Internal Parts	Lightweight-prioritized resin components (partial use)
Dedicated Case	Not included
Batteries	Two AA batteries
Accessories	Battery set Screwdriver Reamer —

*Both models feature the same eccentricity detection performance



"The best phono cable
for the optical cartridges"

PH-001 Phono cable

Maximum performance phono cable
for optical cartridges



Specifications

The highest quality construction throughout

When using an MM or MC cartridge, the cold side of the phono cable serves only as a ground. In the case of optical cartridges, however, the cold side supplies power from the equalizer to the cartridge. Therefore, in such an application, the cold side of the cable is just as important as the hot side. The PH-001 features identical materials and construction on both the hot and cold sides, ensuring that the power supply is kept stable.

Complete Shielding

Optical cartridges have a relatively high impedance, partly due to the photo sensors used in their design. Because of this high impedance, external noise may be picked up if an unshielded phono cable is used. The DS Audio PH-001 phono cable is shielded with a silver-plated copper braid, eliminating potential interference.

RCA terminals machined from pure copper

The PH-001 features RCA phono connectors machined from pure copper; the pure copper base conductor is then gold-plated. Such high-quality connectors allow even more musical detail and texture to shine through, along with a heightened sense of openness.

Silver-plated copper conductors

The PH-001 cable features silver-plated pure copper conductors, each made up of 37 strands of 0.26mm (about 0.01 in) diameter wire. This gives the conductor an exceptionally large cross-section area of 1.964mm².

PH-001 Phono cable	
RCA terminals	Pure copper
RCA terminal body	Aluminum
Cable outer diameter	15mm ϕ
Cable material	Silver plated copper wire
Composition	ϕ 0.26mm / 37wires
Conductor cross-sectional area	1.964mm ²
Insulator material	FEP(fluoroplastic)
Shield	Mesh shield
Shield material	Silver plated copper wire
Length	1.2m
Available terminations: DIN (Straight) to RCA or DIN (Right Angle) or RCA to RCA *Can be used with MM/MC cartridges without any problem	



Welcome to the
Zero Static world

ION-001 Vinyl Ionizer

“I can report with complete confidence that the Vinyl Ionizer ION-001 is without a doubt the most effective anti-static device I have ever used. My vinyl playback has never sounded quieter, more revealing, and more enjoyable.” Positive feedback



Specifications



Generates positive and negative ions to neutralize and remove the static charge from vinyl records

Vinyl records have a surface static electricity charge created by friction. Two common sources of friction are the stylus drag that occurs during record playback and removing records from their jacket and sleeve. By emitting both positive and negative ions in a controlled fashion from its dual outlets, the ION-001 ionizer unit effectively neutralizes and removes static electricity from the record surface. Our unique “fanless” design allows for silent operation for continuous use while playing records. Additionally, the ION-001 performs charge removal for Compact Discs. Note: The degrees of electrostatic charge may vary depending on factors including stylus tip shape, vinyl record material, temperature, humidity, etc.



High power ionizer with low ozone emission

The ION-001 is a high-power device equipped with 4 ionizers, 2 each for positive and negative ions. It utilizes a specialized power supply controller that suppresses the generation of excess ozone, preventing unwanted oxidation.



Designed for quick installation

The architectural tower design provides placement of the ION-001 next to your turntable for quick installation, allowing easy changing of vinyl records. The tower design is effective with a wide range of turntables featuring overall platter height up to 18 cm (about 7.09 in) ". With turntables exceeding this platter height, please use a base/riser to position the ION-001 properly.

Vinyl Ionizer ION-001	
Size	H84mm×W84mm×D250mm
Weight	950g
Input Voltage	DC12V(AC 100V-240V)
Number of ionizers	Positive(+) ion×2, Negative(-) ion ×2
Amount of ion	40×10 ⁶ pcs/cc(-) 40×10 ⁶ pcs/cc(+)
Amount of ozone	Less than 0.01ppm



The best sounding
head shell in the world

HS-001 Solid Head Shell

Reduce the number of contacts with the connector, make the contact with the tone arm more solid, and increase the strength of the head shell body.



Specifications



A vertical pin structure achieves uniform pressure on electrical contacts

Contact surface stabilized by spherical washer
Conventional headshells have a connecting pin attached only to the upper side, causing uneven contact pressure between the tonearm and the headshell. However, the HS-001 Solid Headshell adopts an upper and lower pin structure, equalizing the pressure on the contacts and applying force evenly across the connection to the tonearm. Additionally, we use a special spherical headshell washer (developed by DS Audio) independently at the tonearm's contact point. This enables superior stability over the entire circumference of the contact point, providing improved resonance control.



Machined Ultra Duraluminum

DS Audio precision machines each HS-001 out of a solid billet of duralumin for the ultimate in rigidity and resonance control.



Hand soldered Litz signal leads

After extensive listening tests within the company, DS Audio selected a Japanese-made Litz wire. Further advances were realized by hand soldering this delicate lead wire to preserve signal integrity for optimal sound performance. (Lead wires and connector parts are also available unsoldered by dealer request.)

HS-001 Solid head shell	
Material	Ultra duralumin
Connector	Aluminum
Connector terminals	Gold plated
Lead terminals	Gold plated
External dimensions	H21 × W40 × D55mm(without connector)
Weight	Approximately 10.5g(without leads)
Lead wire	Litz wire 4Nφ 0.08 × 10 × 3 yore rings
Hardware	Stainless steel bolt M2.6 L8×2, M2.6 L12×2

DS Audio's first accessory



ST-50 Stylus cleaner

An adhesive stylus cleaner that does not stain the needle tip with chemical substances



Specifications



The ST-50's gel cleaning pad is made of a urethane resin developed specially for atmospheric micro-dust control in clean rooms

Extremely effective cleaning properties are required to meet the specified standards for such applications. The ST-50 gives you the absolute best in stylus cleaning performance. Many stylus cleaners apply excessive force to the stylus and cantilever during cleaning. The DS Audio ST-50 cleans your stylus at the tracking force set on the tonearm.



Top-class materials incorporated into a fantastic, innovative design

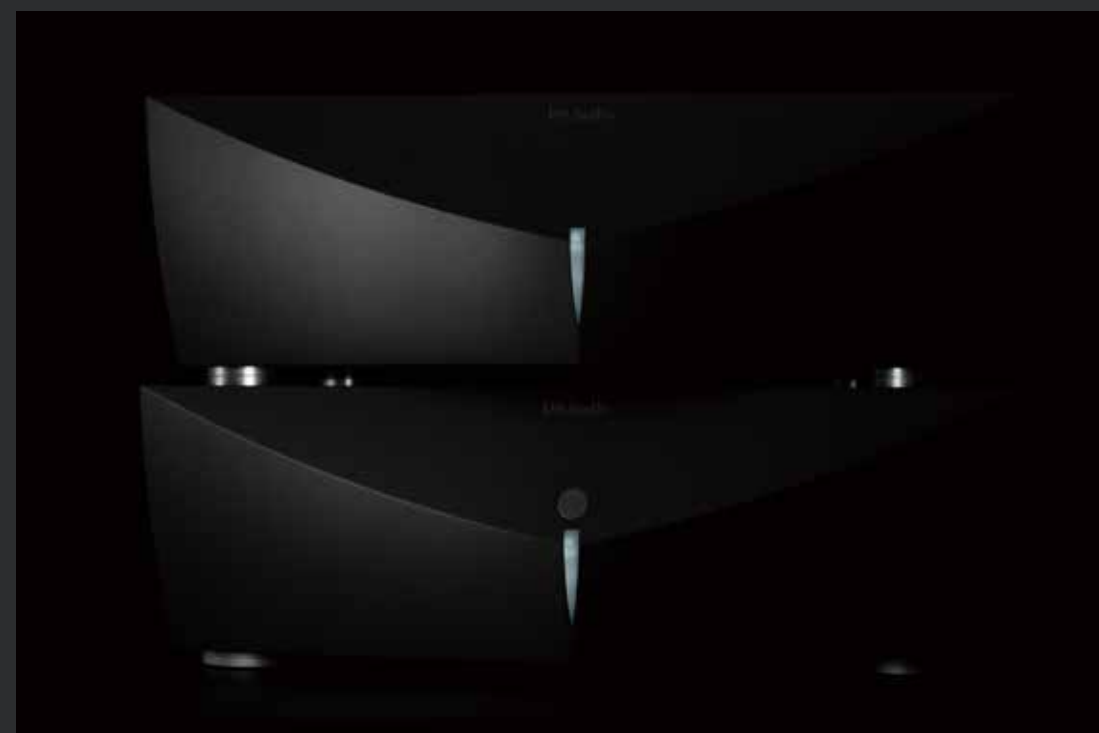
Optimize your vinyl playback system and enjoy the highest level of aural satisfaction. This exclusive design will complement your audio system and is essential for all vinyl enthusiasts. The casing is crafted from an aluminum block before being carefully buffed to perfection. It is then nickel-plated, and the precision laser-cut markings and leather cushion are installed. The finished piece is beautiful and reflects the high-quality standards DS Audio represents.



Washable Urethane Cleaning Gel

The DS Audio ST-50 gives you the best stylus cleaning performance every time. The urethane gel is washable and reusable. Rinse it gently under tap water and let it dry for 30 minutes at room temperature. Its cleaning performance will be completely renewed.

ST-50 Stylus cleaner	
Size	L42mm×W42mm×D13mm
Weight	28g
Gel size	L28mm×W28mm×H3mm
Case material	Aluminum(Nickel treatment)





Digital Stream Co., Ltd.

4-50-40, Kamitsuruma-Honcho, Minami-ku, Sagami-hara, kanagawa, 252-0318, Japan
TEL: +81-42-747-0900 FAX: +81-42-747-6011

<https://ds-audio-w.biz>